



*Fondation de Soins* **VILLAGE GRACE**  
**GRACE VILLAGE** *Care Foundation*

# 2019 ANNUAL REPORT



2018: One-Year Anniversary at the new Grace Village







# MESSAGE FROM THE PRESIDENT

Dear Friends,

During these challenging and difficult times of the COVID-19 virus, I hope that this letter and report find you and yours safe and healthy. Life here at Grace Village has changed in major ways, as our dedicated leadership and staff have implemented mitigation measures to protect our residents. Grace Village undertook multiple measures ahead of those required by the government health authorities. The situation at hand will no doubt have an impact on life at Grace Village and the operations and fundraising efforts of our foundation for some time to come. We are all committed to working together through this crisis and to remain focused on our mission to support Grace Village, our family of residents, and the broader community of seniors here in the Eastern Townships.

I am pleased to provide you with our very first annual report. This report is part of our efforts to better communicate the activities of our foundation as well as the positive and important impact our donor community is having on our sole beneficiaries, Grace Village and our Grace Village family of residents.

Following consultation, feedback and a great deal of consideration, we have changed the name of our foundation from the Dr. W. J. Klinck Foundation, to the Grace Village Care Foundation. The reason for this transition is to more effectively communicate our purpose and mission to solely provide charitable support for the residents and projects of Grace Village. We continue to honour the legacy of our foremost founder Dr. W. J. Klinck, through the creation of the Dr. Klinck Resident Support Fund, one of four funds established under the framework of the Foundation. The other three funds are the Advancement Fund, the Better Living Fund (projects) and the Endowment Fund. You can learn more about these funds at [gracevillage.ca](http://gracevillage.ca) under Donor Opportunities.

Although our name has changed, we continue to be led by the same dynamic team of volunteer board members made up of Townshippers from a variety of backgrounds and professions. We are committed to encouraging and expanding our donor community through a variety of fundraising activities throughout the year. I encourage you to review our activities as described in this report and to see how their success has improved year over year. We are determined to keep the cost of our foundation operations at a minimum so as to ensure that your generous donation has the maximum impact possible. Our board members are themselves donors who do not claim any personal expenses. As a result we continue to keep our costs low reflecting 4.8% of our revenues for 2019.



Very sadly last spring, our much loved benefactor Barbara Allatt passed away. Barbara, her husband Steve and their children Reg, Karen and Brian have made significant contributions to Grace Village along with Steve's and Reg's company Global Excel. It is without reservation that we can tell you their individual and corporate support was essential and instrumental in our mission to build the new Grace Village Care Pavilion.

Barbara's legacy continues to live on in part through our beautiful Allatt Family Gardens. Steve and Karen continue to dedicate themselves to our cause by serving on the Grace Village Board of Directors and by influencing various projects underway. Global Excel continues to provide major support through the donation of funds, equipment and expertise.

The new Grace Village has become a vibrant community enjoying 100% occupancy. Full of life and activities, Grace Village is served by dedicated staff and volunteers. Our common spaces such as Faith Hall, the Allatt Family Gardens, and the CN Training room are enjoyed by various community based groups and individuals. We even hosted two weddings!

Partnerships with local area hospitals, universities and researchers are advancing the study and evolution of senior care. Grace Village continues to be a training platform for practical application of nursing, certified care giving and counselling programs. There are so many community partnerships underway and in the works that we have included a description of these resident life enriching initiatives for your benefit.

All of this has been made possible through the generous donations of people like you, businesses, corporations and foundations as well as some government grants. We are truly grateful for the incredible ongoing support that we receive.

As our attention turns to the year ahead we continue to face fundraising challenges including the need to raise the remaining \$2.5 million of our total \$15 million for construction costs of our new care pavilion in 2016 & 2017. We will also place emphasis on raising funds to support an ever-growing number of residents in need of financial support for the cost of their care.

I thank you for your continued support and with our desire to constantly improve, I invite your feedback on this our first annual report.

Should you wish to provide commentary regarding the annual report, or need any further information or assistance, please contact our foundation coordinator, Ms. Emma Muise at 819-569-0546 extension 5033 or [emuise@masscom.ca](mailto:emuise@masscom.ca).

With gratitude,



Hon. David Price  
President





## OUR MISSION

To support Massawippi Retirement  
Communities - Grace Village



# OVERVIEW - History of the Grace Village Care Foundation

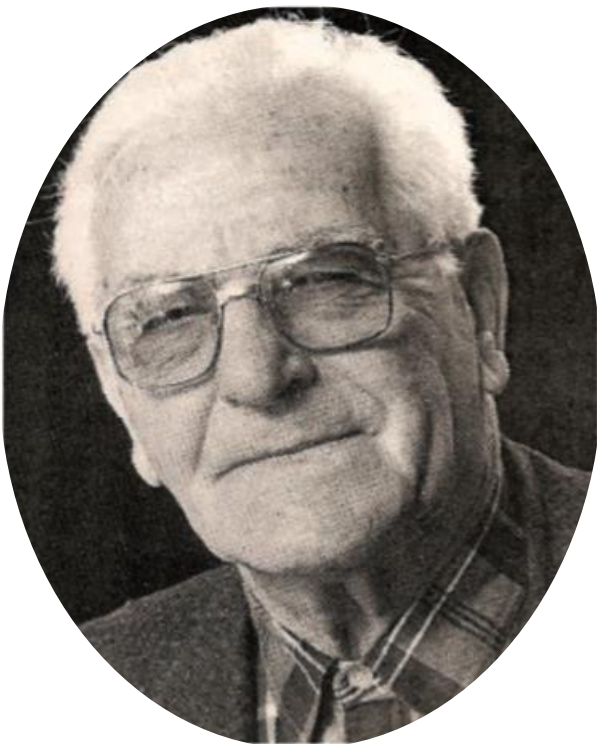
Most of you are familiar with the incredible story of renewal for Massawippi Retirement Communities, Grace Village and the Grace Village Care Foundation over the past five years. In 2015 our organization of long standing embarked on a vision and plan for renewal. The need for change was as a result of aging infrastructure that would soon no longer comply with a changing regulatory environment in Quebec. Our two senior care homes in Lennoxville and North Hatley had a long and successful heritage of providing professional, compassionate and loving care, all the while extending charitable support to those in need but the buildings were in need of replacement.

As we moved forward with our plan for renewal it became clear that major upgrades to our Dr. W. J. Klinck Foundation were needed in order to support the mammoth team effort underway. With the support and counsel of professional philanthropic consultants as well as volunteers with a variety of expertise, we

embarked on a plan to bolster and build upon our existing foundation. To understand the need for change one first has to understand the original purpose of the Dr. W. J. Klinck Foundation.

Both of our Senior Care Homes had, and Grace Village continues to maintain, status as a charitable organization. As a result, our homes for many years had no need for a separate foundation. All charitable donations were made directly to the homes and receipts for income taxes were provided.

Changes to regulations governing Care Homes precluded residents from making donations to their care facilities. These important changes were needed in order to protect vulnerable residents from a minority of unscrupulous individuals who pressured



*Dr. W. J. Klinck*



those in their care to donate. This meant there were no provisions to allow donations from residents who legitimately wanted to support the organization that was caring for them, even though they may have been lifelong donors.

The Dr. W. J. Klinck Foundation was therefore created in 2004 as a legal third-party charitable organization thus providing a venue for residents who would like to donate in support of our homes.

For years the foundation operated with three directors, the minimum number allowed by law and conducted the minimum number of documented meetings and annual reporting. The foundation was not operated as a serious fundraising organization and enjoyed very little public profile in the community. Outside donations continued to flow directly to our homes.

With the need to raise millions of dollars in support of the capital campaign for the construction of our new Grace Village Care Pavilion came the need to enhance the capabilities of the Dr. W. J. Klinck Foundation. We recruited additional volunteer board members, engaged a coordinator and together learned what was required to transition our foundation into a high profile, community based, fundraising entity.

Today, five years later, we have a dynamic team of volunteers, one staff member, and the support of thousands of donors locally and from abroad. With virtually no history or experience in building, running, and growing a foundation, we have come a long way. That said, there is still much to learn and much to improve. We remain focused on positive change, innovation and responsible stewardship so that we may be in position to continue supporting the important mission of Grace Village for generations to come.





# OUR FUNDS

1

## DR. KLINCK FUND

The purpose of the Dr. Klinck Fund is consistent with the original vision of Dr. Klinck over 6 decades ago - to provide some level of financial support for seniors who may not be able to afford the full cost of care.

2

## ADVANCEMENT FUND

The Grace Village Advancement Fund supports the Capital Campaign in paying for the new Care Pavilion, and towards the next phases of development at Grace Village.

3

## BETTER LIVING FUND

The Grace Village Better Living Fund supports a broad range of project-oriented initiatives at Grace Village that enhance the quality of life and resources available for our seniors.

4

## ENDOWMENT FUND

The Endowment Fund has stipulations that the capital is to be maintained, and has focused on the need for new equipment & infrastructure, but the long-term vision is towards supporting residents who cannot afford the cost of their care.



# TESTIMONIAL

One of the residents at Grace Village has been subsidized for many years. James\* was born with a severe intellectual disability, and as he aged his family and caregivers were no longer able to care for him. Even after he moved to the Grace, his mandatory & family have continued to support the Grace Village Care Foundation when they can, and recently sent the Board of the Foundation the following letter of encouragement:

"Could you please convey to the Foundation members my thanks for all that they have done and continue to do for my ward, James. We've heard so many times that it takes a village to raise a child - and that's very true in many cases. What we do not hear very often is that it takes a village to look after its persons in need - those not able to 'do' for themselves.



I do not really know where we would be without your help for James. Surely he would not be as safe, secure, watched over and yes, loved as he is anywhere else but at Grace Village - and he is lucky that you care for him enough to make it possible for him to be looked after there.

He will be 83 years old on June 9<sup>th</sup> and when we celebrate his Birthday with him, Wendy\* and I will pause and think about the greatest gift that he receives year after year, the gift of security from a group of people who commit themselves to taking care of those who cannot care for themselves.

Yes, please thank those kind, thoughtful, and generous Foundation members for me.

*"Whoever oppresses a poor man insults his Maker, but whoever is generous to the needy honours him."*

\*Names changed for confidentiality.





# FINANCIAL OVERVIEW

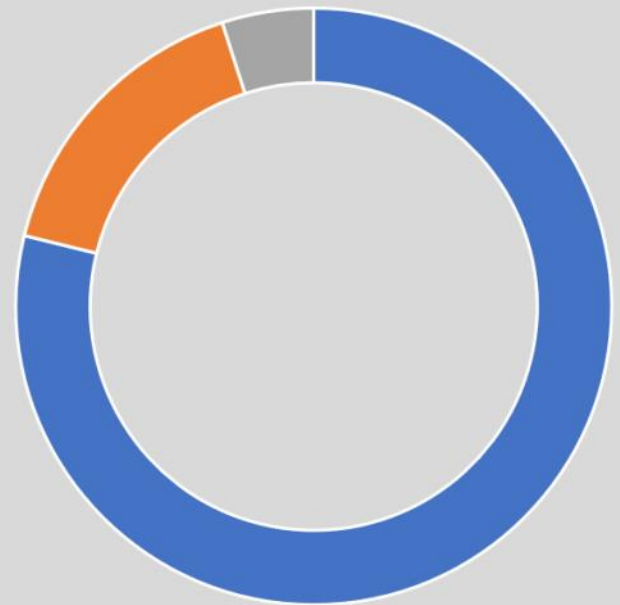
We are so thankful for our generous donors who are committed to helping the seniors in our Eastern Townships Community thrive.

BN 85971 3109 RR0001

## REVENUE

### Donations by Fund

■	Advancement Fund .....	\$1,186,955 (Capital Campaign)
■	Dr. Klinck Fund .....	\$226,101
■	Better Living Fund.....	\$72,237



### Comparative:

Advancement Fund 2018 - \$2,445,937

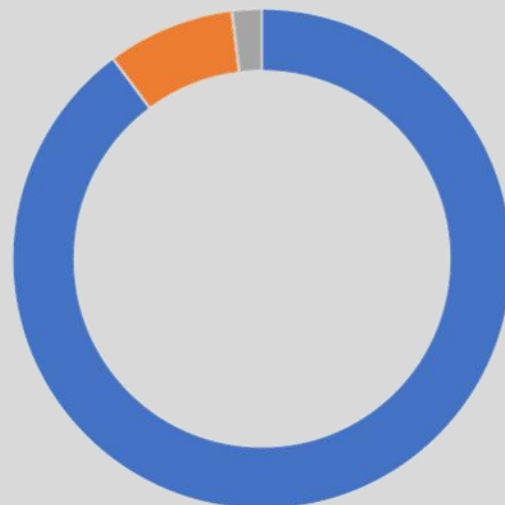
Dr. Klinck Fund 2018 - \$11,565

Better Living Fund 2018 - \$85,486



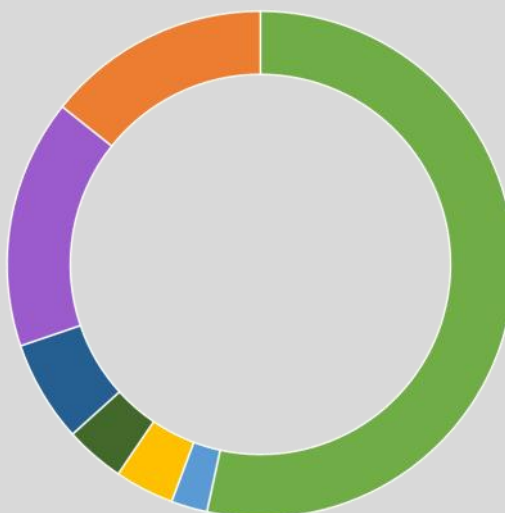
# DISBURSEMENTS OF GRANTS

Capital Expenses .....	\$722,310
(Construction Costs, Professional Fees, & Loan Interest)	
Dr. Klinck Fund.....	\$66,465
(Resident Support)	
Better Living Fund .....	\$15,569



# EXPENSES

Salaries, Benefits, & Training .....	\$38,133
Office Expenses .....	\$1,649
Printing & Publicity .....	\$2,707
Capital Campaign Expenses .....	\$2,719
Fundraising Expenses .....	\$11,367
Administration Expenses.....	\$10,211
(Professional Fees, Investment Fees, Insurance, Bank Fees)	
Other Expenses .....	\$4,631
(Software, Online Giving Expenses, etc.)	



In 2019, the Foundation operated at a 4.8 percentage of fundraising costs to fundraising revenue.

Note: All expenses are paid through the Massawippi Retirement Communities, except for banking fees and online giving expenses.



# OUR IMPACT

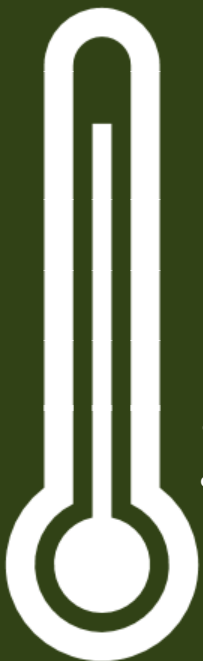
Care for  
**160+ seniors**  
at Grace Village  
in 2019



**4** Residents Fully  
or Partially  
Supported

**\$1,186,955**

in cash received in 2019  
towards the Capital  
Campaign



Goal  
Reached!  
**\$250,000**  
Annual  
Campaign

- \$58,090 Capital
- \$193,460 Klinck
- \$1,030 Better Living

(\$222,725 in 2018)

**Behind-the-Scenes  
Support to Grace Village:**

- Corporate Finance
- Gifts-in-Kind Appraisals
- Property Sales
- Municipality Discussions



# 1250



Apple Pies sold,  
raising

## \$12,857

(1050 pies @ \$12,332 In 2018)



# \$37,110



raised at the  
**3rd Annual**  
Grace Village  
Golf Tournament

Golf Stats:

Total raised 2018 - \$35,500

Auction Profit 2019 - \$15,355

Auction Profit 2018 - \$11,565

Total Attendees 2019 - 95

Total Attendees 2018 - 91

Golfer Fee 2019 & 2018: \$150

Dinner-Only Fee 2019 & 2018: \$100

Foursome Fee 2019 & 2018: \$600



## Over 75 Volunteers

helped at the  
Golf Tournament,  
Apple Pie  
Fundraiser,  
& on the Board





# PARTNERSHIPS & PROGRAMS

Grace Village has been proud to welcome a significant amount of partnerships with local schools, businesses, community groups, churches, and other organizations. Some of these include:



**Bishop's College School** - Biweekly intergenerational program supported by a grant from the provincial government

**Eastern Townships School Board** - Elementary & High Schools for Christmas concerts, class projects, student placements, etc

**Champlain College** - *Nursing Program*: Teaching Facility & Nursing Placements; *Special Care Counselling Program*: 4 stagiaires per year & Field Trips



**Bishop's University (BU)** - *Psychology Department*: 1-2 practicum students per year & Community Psychology course project

**Other Education Partnerships:** BU Seniors Academy for Lifelong Learning Seniors Seminars, Lennoxville Vocational Training Centre student placements, Ecole La Source intergenerational activities, Parole de Vie student activities, Seminaire de Sherbrooke intergenerational activities, Université de Sherbrooke upcoming Business School project, Centre de Recherches sur le Vieillessement research projects, New Horizons Adult Education Centre student placements, CRDITED Estrie special needs student work placements



**Global Excel Management** - Employee volunteering projects, ongoing accounting support, & donations of office equipment, sponsorships, etc.

**Le Renaissance Manoir St-Francis** - Cooperation between retirement residences, including regular "High Tea" activities

**Lennoxville Quilting Group** - Host weekly full-day quilting activities, residents invited to observe, & make regular donations of lap quilts, aprons, & auction items



**Mon Shack** (mental health residential organization) - Bi-weekly small-group activities & one-on-one visits

**Uplands Cultural & Heritage Centre** - Provide artistic & cultural activities to residents



**St. Barnabas Church "Grace Ladies"** - Weekly volunteer group provides & serves Tea Time refreshments

**Hope Community Church** - Residents attend monthly Seniors Lunch event

**Various Local Churches** - Provide church services & spiritual accompaniment



# ROOM DEDICATIONS

The Foundation began dedicating rooms and areas of the Grace Village Care Pavilion this year, inviting board members, volunteers, and Donor family members to the events. In 2019, the Foundation celebrated 5 dedications: Faith Hall, the Webster Wing, the Global Excel Wing, the Sam Pollock Sr. Wing, the Bannerman Foundation Living Room, the George MacDougall Dining Room, the CN Training Room, the Betty & Chum Blenkhorn Workshop, and the Crook Family Administrative Centre.





# GET INVOLVED

## DONATE

You can donate through cash or cheque, or online with credit or debit. Monthly Pre-Authorized Remittance (PAR) donations are also a great way our supporters help Grace Village. The Foundation also accepts donations of shares & securities. Gifts-in-Kind may also be an option, such as Large-Print books.

## LEGACY

Including the Grace Village Care Foundation in your estate planning is another way you can make a difference, through bequests, life insurance, endowment funds, & RRSP's.

## VOLUNTEER

We have several opportunities during the year to get involved in fundraising events like the Golf Tournament & Apple Pie Fundraiser. You can also volunteer directly at Grace Village, visiting residents and encouraging them with letters & phone calls.



# BOARD OF DIRECTORS

## 2019

### BOARD OFFICERS

Hon. David Price  
**President**

James Davidson  
**Vice-President**

James Crook  
**Treasurer**

Nathalie Lafond  
**Secretary**

### BOARD MEMBERS

Duncan Fortier  
**Board Member until  
January 2020**

Robert Halsall

Peter Provencher

John Haffenden

John Klinck  
**Honorary President**

### ADVISORY BOARD

Samuel Elkas

Steve Allatt

Mike Everett

Greg Bishop

Matt McBrine  
**Board Member until  
January 2019**

### STAFF

Emma Muise  
**Foundation Coordinator**



2018: Naming of the Allatt Family Gardens



## WHO WE ARE

The Grace Village Care Foundation is a charity located in Sherbrooke, Quebec & exists to support seniors in the Eastern Townships

## OUR MISSION

To support Massawippi Retirement Communities - Grace Village

## CONTACT

1515, rue Pleasant View  
Sherbrooke, QC J1M 0C6

819-569-0546 x5033

[gvfoundation@masscom.ca](mailto:gvfoundation@masscom.ca)

[www.gracevillage.ca/donations](http://www.gracevillage.ca/donations)



*Fondation de Soins* **VILLAGE GRACE**  
**GRACE VILLAGE** *Care Foundation*